

Sample Customer

Sample Address (Redacted)

Your personalized assessment • Expert analysis • Professional recommendations



NUMBER OF WINDOWS
22



PROPERTY AGE
1967-1975



CURRENT HEATING
Oil boiler



ELECTRICAL SUPPLY
Single phase



TOTAL ROOMS
22



HEATING RADIATORS
20



SMART METER
No



LOFT INSULATION
100



FUSE BOX
In Entrance



MAIN FUSE RATING
80A



SPARE WAYS
2



WALL CONSTRUCTION
Cavity wall



CAVITY INSULATION
Unknown



BATHROOMS
2

TABLE OF CONTENTS

Complete Heat Loss Assessment & ASHP Installation Guide



PROPERTY OVERVIEW

General property information and photos



HEAT LOSS TABLE

Complete heat loss calculation table with room measurements



TOTAL ROOMS / FLOOR PLAN

Room count and floor plan details



HEATING SYSTEMS / RADIATORS

Current heating system and radiator details



ELECTRICAL SYSTEMS

Consumer unit, phase, and electrical information



LOFT ASSESSMENT

Loft insulation, access, and height details



ASHP LOCATION

ASHP location assessment and mounting details



CYLINDER LOCATION

Cylinder location and installation details



SOLAR PV SURVEY

Solar panel assessment and roof analysis



EPC / ENERGY BILLS

EPC rating and energy supplier information



PHOTO DOCUMENTATION

All survey photos organized by category



INSTALLATION REFERENCE

Technical reference for installers



THERMAL IMAGING

Thermal imaging analysis and heat loss visualization

POWERED BY



VERTEX

The New Standard for Renewable Surveys



VERTEX

The New Standard for Renewable Surveys


Sample Customer - Sample Address (Redacted)

Surveyor: Simon Elliott

Page 2 of 72

 PROPERTY


 HEAT LOSS...

 ROOMS / F...

 HEATING /...

 ELECTRICA...

 LOFT

 ASHP

 CYLINDER



PROPERTY OVERVIEW

COMPLETE ASSESSMENT OF PROPERTY FEATURES &
CONSTRUCTION DETAILS

Sample Address (Redacted)

 SOLAR PV ...


 EPC / ENE...

 PHOTO DOC...

 INSTALLAT...

 THERMAL I...



YOUR LOGO HERE

SAMPLE DOCUMENT — DETAILS REDACTED

BUILDING FABRIC

PROPERTY TYPE

House

HOUSE TYPE

Detached

PROPERTY AGE

1967 1975

WALL CONSTRUCTION

Cavity wall

WALL TYPE

Cavity wall

ROOF CONSTRUCTION

Unknown

FLOOR CONSTRUCTION

Suspended Timber

INSULATION

LOFT INSULATION THICKNESS

100mm

LOFT INSULATION COVERAGE

None%

CAVITY WALL INSULATION

Unknown

CYLINDER INSULATION

Yes

WINDOWS & GLAZING

TOTAL WINDOWS

22

AIR TIGHTNESS

DRAUGHT PROOFING

Not Recorded

MECHANICAL VENTILATION

Not Recorded

HEATING SYSTEM



CURRENT FUEL TYPE

Oil

CURRENT HEATING SYSTEM

Oil boiler

HEATING CONTROLS

Room thermostat

CYLINDER DESCRIPTION

Cupboard

ELECTRICAL

ELECTRICAL SUPPLY

Single Phase

CONSUMER UNIT LOCATION

In entrance

METER LOCATION

In entrance

SMART METER

No

CONSUMER UNIT CONDITION

No

CONSUMER UNIT ACCESS NOTES

No

ASHP LOCATION

On front of extension

TOTAL ROOMS

22

TOTAL RADIATORS

20

NUMBER OF OCCUPANTS

Home All Day

BATHROOMS COUNT

3

EXTENSION COUNT

1

LOFT ACCESS

Yes

LOFT HEIGHT

2527000mm

LOFT LIGHTING

Yes

LOFT BOARDED

Yes

LOFT HATCH SIZE

0.58x0.65m

BEDROOMS (RDSAP)

4

RECEPTION ROOMS (RDSAP)

2

NUMBER OF FLOORS (RDSAP)

2

EXISTING EXTENSIONS




Extension 1 (No. 1)

<div>PROPERTY AGE</div> <div>1967 1975</div>	<div>WALL CONSTRUCTION</div> <div>Solid Brick</div>
<div>WALL INSULATION</div> <div>Cavity Filled</div>	<div>ROOF CONSTRUCTION</div> <div>Pitched Insulated</div>
<div>EXTENSION NUMBER</div> <div>1</div>	

 PROPERTY

 HEAT LOSS...

 ROOMS / F...

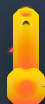
 HEATING /...

 ELECTRICA...

 LOFT

 ASHP

 CYLINDER



HEAT LOSS TABLE

DETAILED HEAT LOSS CALCULATIONS & THERMAL
ANALYSIS

Sample Address (Redacted)

 SOLAR PV ...


 EPC / ENE...

 PHOTO DOC...

 INSTALLAT...

 THERMAL I...



YOUR LOGO HERE

SAMPLE DOCUMENT — DETAILS REDACTED

Room	Ceiling Height	Floor Material	Windows (Size Orientation Type)	Radiators (Width Height Space Left/Right Type)	Pipework (Size Material)	Doors (Count Size)
<div>Entrance Hall</div> <div>Ground</div>	2.52m	Tiles	<div>430×800MM</div> <div>↗ Orientation: South</div> <div>Timber - Pre 2002</div>	None	N/A	<div>1</div> <div>2052mm×910mm</div>
<div>Other</div> <div>Ground</div>	2.52m	Concrete	None	None	N/A	0
<div>Utility Room</div> <div>Ground</div>	2.52m	Lino	<div>2360×1170MM</div> <div>↗ Orientation: South</div> <div>uPVC - Pre 2002</div>	<div>W: 1600MM H: 600MM</div> <div>← 150mm</div> <div>POSITION: INTERNAL WALL</div> <div>Double Panel (No Fins/Convactor)</div>	<div>15MM</div> <div>Copper</div>	0
<div>Kitchen & Dining Room</div> <div>Ground</div>	2.52m	suspended_timber	<div>2380×1520MM</div> <div>↗ Orientation: South</div> <div>uPVC - Pre 2002</div> <div>890×1080MM</div> <div>↗ Orientation: North</div> <div>Timber - Pre 2002</div>	None	N/A	0
<div>Other</div> <div>Ground</div>	2.52m	suspended_timber	<div>560×1180MM</div> <div>↗ Orientation: North</div> <div>Timber - Pre 2002</div>	None	N/A	0

ROOM	CEILING HEIGHT	FLOOR MATERIAL	WINDOWS (SIZE ORIENTATION TYPE)	RADIATORS (WIDTH HEIGHT SPACE LEFT/RIGHT TYPE)	PIPEWORK (SIZE MATERIAL)	DOORS (COUNT SIZE)
<div>Other</div> <div>Ground</div>	2.52m	Carpet and wood	<div>1460×890MM</div> <div>↗ Orientation: West</div> <div>Timber - Pre 2002</div>	<div>W: 960MM H: 730MM</div> <div>← 1300mm 50mm →</div> <div>POSITION: EXTERNAL WALL</div> <div>Single Panel (No Fins/Convector)</div> <div>W: 1120MM H: 74MM</div> <div>← 600mm 500mm →</div> <div>POSITION: INTERNAL WALL</div> <div>Double Panel (No Fins/Convector)</div>	<div>15MM</div> <div>Copper</div>	<div>1</div> <div>2100mm×900mm</div>
<div>Living Room</div> <div>Ground</div>	Sloping 2.65m	suspended_timber	<div>2140×2010MM</div> <div>↗ Orientation: East</div> <div>uPVC - 2002 to 2021</div> <div>2880×1720MM</div> <div>↗ Orientation: South</div> <div>uPVC - 2002 to 2021</div>	<div>W: 800MM H: 600MM</div> <div>← 150mm 80mm →</div> <div>POSITION: EXTERNAL WALL</div> <div>Double Panel (No Fins/Convector)</div> <div>W: 800MM H: 600MM</div> <div>← 300mm 250mm →</div> <div>POSITION: INTERNAL WALL</div> <div>Double Panel (No Fins/Convector)</div>	<div>15MM</div> <div>Copper</div>	<div>0</div>
<div>Office</div> <div>Ground</div>	2.65m	suspended_timber	<div>1140×910MM</div> <div>↗ Orientation: North</div> <div>uPVC - 2002 to 2021</div>	<div>W: 1120MM H: 580MM</div> <div>← 20mm 50mm →</div> <div>POSITION: INTERNAL WALL</div> <div>Single Panel (No Fins/Convector)</div>	<div>15MM</div> <div>Copper</div>	<div>0</div>

ROOM	CEILING HEIGHT	FLOOR MATERIAL	WINDOWS (SIZE ORIENTATION TYPE)	RADIATORS (WIDTH HEIGHT SPACE LEFT/RIGHT TYPE)	PIPEWORK (SIZE MATERIAL)	DOORS (COUNT SIZE)
<div>Other</div> <div>Ground</div>	2.65m	suspended_timber	<div>1710×1680MM</div> <div>↗ Orientation: East</div> <div>uPVC - 2002 to 2021</div>	<div>W: 1000MM H: 500MM</div> <div>← 150mm 150mm →</div> <div>POSITION: INTERNAL WALL</div> <div>Single Panel with Convector (Type 11)</div>	<div>15MM</div> <div>Copper</div>	0
<div>Play room</div> <div>Ground</div>	2.65m	suspended_timber	<div>1710×1680MM</div> <div>↗ Orientation: East</div> <div>uPVC - 2002 to 2021</div>	<div>W: 3100MM H: 450MM</div> <div>30mm →</div> <div>POSITION: INTERNAL WALL</div> <div>Single Panel (No Fins/Convector)</div>	<div>15MM</div> <div>Copper</div>	0
<div>WC</div> <div>Ground</div>	2.65m	suspended_timber	<div>1020×1360MM</div> <div>↗ Orientation: East</div> <div>uPVC - 2002 to 2021</div>	<div>W: 960MM H: 600MM</div> <div>← 300mm 200mm →</div> <div>POSITION: INTERNAL WALL</div> <div>Single Panel (No Fins/Convector)</div>	<div>15MM</div> <div>Copper</div>	0
<div>Bedroom 1</div> <div>1st</div>	2.36m	suspended_timber	<div>1710×1350MM</div> <div>↗ Orientation: East</div> <div>uPVC - 2002 to 2021</div> <div>1710×1350MM</div> <div>↗ Orientation: South</div> <div>uPVC - 2002 to 2021</div>	<div>W: 1900MM H: 600MM</div> <div>← 250mm 600mm →</div> <div>POSITION: UNDER WINDOW</div> <div>Sill: 760mm</div> <div>Single Panel (No Fins/Convector)</div>	<div>15MM</div> <div>Copper</div>	0
<div>Cupboard</div> <div>1st</div>	2.36m	suspended_timber	None	<div>W: 720MM H: 580MM</div> <div>← 200mm 200mm →</div> <div>POSITION: INTERNAL WALL</div> <div>Single Panel (No Fins/Convector)</div>	<div>15MM</div> <div>Copper</div>	0

ROOM	CEILING HEIGHT	FLOOR MATERIAL	WINDOWS (SIZE ORIENTATION TYPE)	RADIATORS (WIDTH HEIGHT SPACE LEFT/RIGHT TYPE)	PIPEWORK (SIZE MATERIAL)	DOORS (COUNT SIZE)
En-suite Bathroom 1st	2.36m	suspended_timber	<div>1700×1370MM</div> <div>↗ Orientation: South</div> <div>uPVC - 2002 to 2021</div>	<div>W: 1280MM H: 600MM</div> <div>← 100mm 350mm →</div> <div>POSITION: UNDER WINDOW</div> <div>Sill: 770mm</div> <div>Single Panel (No Fins/Convactor)</div>	<div>15MM</div> <div>Copper</div>	0
Bathroom 1st	2.36m	suspended_timber	<div>1030×1070MM</div> <div>↗ Orientation: West</div> <div>uPVC - 2002 to 2021</div>	<div>W: 500MM H: 600MM</div> <div>← 50mm</div> <div>POSITION: INTERNAL WALL</div> <div>Single Panel with Convactor (Type 11)</div> <div>W: 400MM H: 1200MM</div> <div>POSITION: INTERNAL WALL</div> <div>Towel Rail / Ladder Towel Rail</div>	<div>15MM</div> <div>Copper</div>	0
Landing 1st	2.36m	suspended_timber	<div>1720×1360MM</div> <div>↗ Orientation: West</div> <div>uPVC - 2002 to 2021</div>	<div>W: 1600MM H: 600MM</div> <div>← 450mm 450mm →</div> <div>POSITION: UNDER WINDOW</div> <div>Sill: 950mm</div> <div>Double Panel (No Fins/Convactor)</div>	<div>15MM</div> <div>Copper</div>	0
Bathroom 2 1st	Sloping 1.59m - 2.36m	suspended_timber	<div>890×1080MM</div> <div>↗ Orientation: West</div> <div>uPVC - 2002 to 2021</div>	<div>W: 750MM H: 830MM</div> <div>← 50mm 150mm →</div> <div>POSITION: INTERNAL WALL</div> <div>Single Panel (No Fins/Convactor)</div>	<div>15MM</div> <div>Copper</div>	0
Cupboard Ground	2.36m	suspended_timber	None	None	N/A	0

ROOM	CEILING HEIGHT	FLOOR MATERIAL	WINDOWS (SIZE ORIENTATION TYPE)	RADIATORS (WIDTH HEIGHT SPACE LEFT/RIGHT TYPE)	PIPEWORK (SIZE MATERIAL)	DOORS (COUNT SIZE)
<u>Bedroom</u> <u>2</u> 1st	2.36m	suspended_timber	<div>1020×1360MM</div> <div>↗ Orientation: North</div> <div>uPVC - Unknown</div>	<div>W: 1120MM H: 600MM</div> <div>← 150mm 10mm →</div> <div>POSITION: UNDER WINDOW</div> <div>Sill: 830mm</div> <div>Single Panel (No Fins/Convactor)</div>	<div>15M M</div> <div>Copper</div>	0
<u>Bedroom</u> <u>3</u> 1st	2.36m	suspended_timber	<div>1590×1270MM</div> <div>↗ Orientation: East</div> <div>uPVC - Unknown</div>	<div>W: 1300MM H: 600MM</div> <div>← 600mm 150mm →</div> <div>POSITION: UNDER WINDOW</div> <div>Sill: 971mm</div> <div>Single Panel (No Fins/Convactor)</div>	<div>15M M</div> <div>Copper</div>	0
<u>Bedroom</u> <u>4</u> 1st	2.36m	suspended_timber	<div>1590×1040MM</div> <div>↗ Orientation: East</div> <div>uPVC - Unknown</div>	<div>W: 1100MM H: 600MM</div> <div>← 200mm 600mm →</div> <div>POSITION: UNDER WINDOW</div> <div>Sill: 930mm</div> <div>Single Panel (No Fins/Convactor)</div>	<div>15M M</div> <div>Copper</div>	0
<u>Other</u> 1st	2.36m	suspended_timber	<div>1000×1060MM</div> <div>↗ Orientation: East</div> <div>uPVC - Unknown</div>	<div>W: 800MM H: 500MM</div> <div>← 400mm 450mm →</div> <div>POSITION: UNDER WINDOW</div> <div>Sill: 938mm</div> <div>Single Panel (No Fins/Convactor)</div>	<div>15M M</div> <div>Copper</div>	0



PROPERTY



HEAT LOSS...



ROOMS / F...



HEATING /...



ELECTRICA...



LOFT



ASHP



CYLINDER



TOTAL ROOMS & FLOOR PLAN

DETAILED ROOM-BY-ROOM ANALYSIS & FLOOR PLAN ASSESSMENT

Sample Address (Redacted)



SOLAR PV ...



EPC / ENE...



PHOTO DOC...



INSTALLAT...



THERMAL I...



YOUR LOGO HERE

SAMPLE DOCUMENT — DETAILS REDACTED



VERTEX

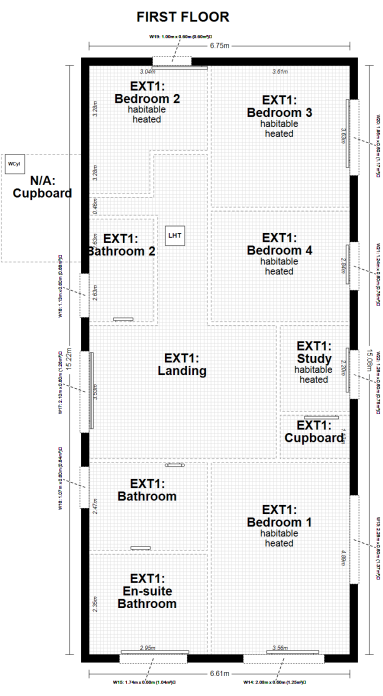
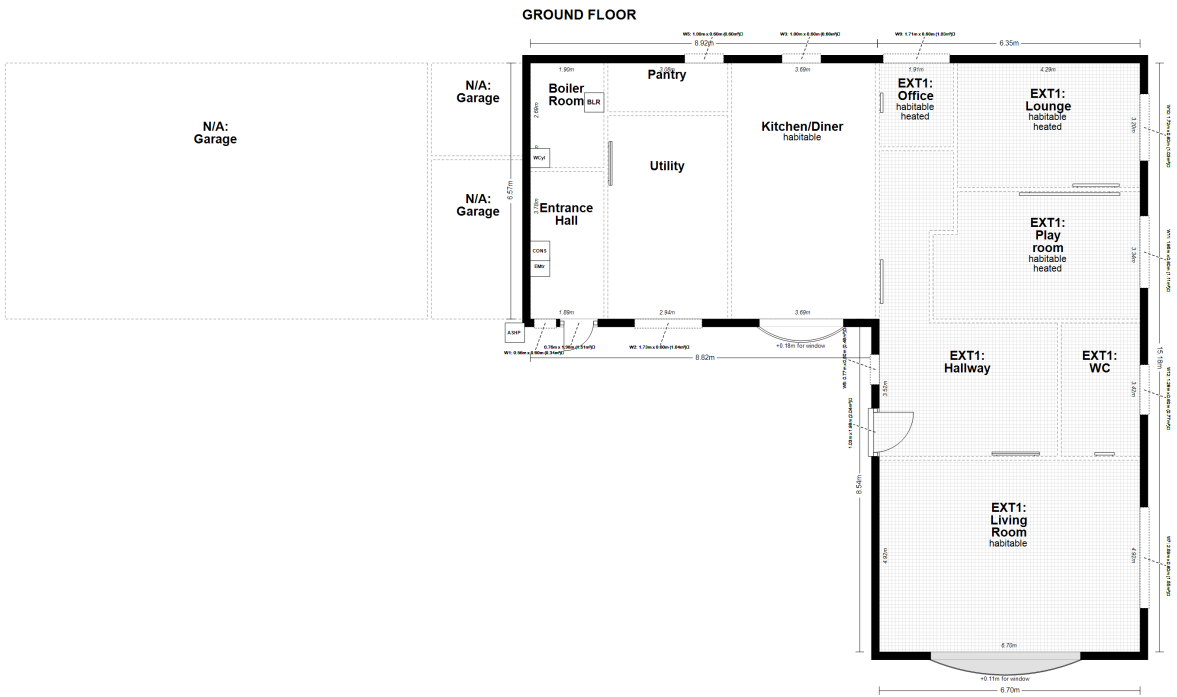
The New Standard for Renewable Surveys

Sample Customer - Sample Address (Redacted)

Surveyor: Simon Elliott

Page 13 of 72

All Floors - EPC Floor Plan (with Measurements)



Entrance Hall

EXTERNAL WALLS: 4

CEILING HEIGHT

2.52m

AREA

7.1m²

VOLUME

18.00m³

FLOOR MATERIAL

Tiles

ROOM STATUS

Heated

WALL TYPE SUMMARY

EXTERNAL WALLS

4

INTERNAL WALLS

0

HLP (HEAT LOSS PARTITION)

0

PARTY WALLS

0

WALL MEASUREMENTS - ENTRANCE HALL

WALL 1 - EXTERNAL

3.78m

WALL 2 - INTERNAL

1.89m

WALL 3 - INTERNAL

3.78m

WALL 4 - EXTERNAL

1.89m

WINDOWS - ENTRANCE HALL

WINDOW 1

430×800mm • South • Pre 2002 • Timber

ROOM DESCRIPTION

Complete room-by-room assessment for heat pump sizing. Document windows, radiators, doors, and room dimensions.

[◀ BACK TO HEAT LOSS TABLE](#)

Other

CEILING HEIGHT

2.52m

FLOOR MATERIAL

Concrete

ROOM STATUS

Heated

ROOM DESCRIPTION

Complete room-by-room assessment for heat pump sizing. Document windows, radiators, doors, and room dimensions.

[◀ BACK TO HEAT LOSS TABLE](#)

Utility Room

CEILING HEIGHT

2.52m

FLOOR MATERIAL

Lino

ROOM STATUS

Heated

PIPEWORK DETAILS

PIPE SIZE

15mm

PIPE MATERIAL

Copper

WINDOWS - UTILITY ROOM

WINDOW 1

2360×1170mm • South • Pre 2002 • uPVC

RADIATORS

Radiator 1

Type: Double Panel (No Fins/Convactor)

Position: Internal wall

Size: 1600mm × 600mm

ROOM DESCRIPTION

Complete room-by-room assessment for heat pump sizing. Document windows, radiators, doors, and room dimensions.

[◀ BACK TO HEAT LOSS TABLE](#)



VERTEX

The New Standard for Renewable Surveys

Sample Customer - Sample Address (Redacted)

Surveyor: Simon Elliott

Page 17 of 72

Kitchen/Dining Room

CEILING HEIGHT

2.52m

FLOOR MATERIAL

suspended_timber

ROOM STATUS

Heated

WINDOWS - KITCHEN/DINING ROOM

WINDOW 1

2380×1520mm • South • Pre 2002 • uPVC

WINDOW 2

890×1080mm • North • Pre 2002 • Timber

ROOM DESCRIPTION

Complete room-by-room assessment for heat pump sizing. Document windows, radiators, doors, and room dimensions.

◀ BACK TO HEAT LOSS TABLE

Other

CEILING HEIGHT

2.52m

FLOOR MATERIAL

suspended_timber

ROOM STATUS

Heated

WINDOWS - OTHER

WINDOW 1

560×1180mm • North • Pre 2002 • Timber

ROOM DESCRIPTION

Complete room-by-room assessment for heat pump sizing. Document windows, radiators, doors, and room dimensions.

◀ BACK TO HEAT LOSS TABLE

Other

CEILING HEIGHT

2.52m

FLOOR MATERIAL

Carpet and wood

ROOM STATUS

Heated

PIPEWORK DETAILS

PIPE SIZE

15mm

PIPE MATERIAL

Copper

WINDOWS - OTHER

WINDOW 1

1460×890mm • West • Pre 2002 • Timber

RADIATORS

Radiator 1

Type: Single Panel (No Fins/Convactor)

Position: External wall

Size: 960mm × 730mm

Space: 1300mm / 50mm

Radiator 2

Type: Double Panel (No Fins/Convactor)

Position: Internal wall

Size: 1120mm × 74mm

Space: 600mm / 500mm

ROOM DESCRIPTION

Complete room-by-room assessment for heat pump sizing. Document windows, radiators, doors, and room dimensions.

[◀ BACK TO HEAT LOSS TABLE](#)

Living Room

EXTERNAL WALLS: 4

CEILING HEIGHT

Sloping 2.65m

AREA
33.4m²

VOLUME
88.64m³

FLOOR MATERIAL
suspended_timber

ROOM STATUS
Heated

WALL TYPE SUMMARY

EXTERNAL WALLS

4

INTERNAL WALLS

1

HLP (HEAT LOSS PARTITION)

0

PARTY WALLS

0

PIPEWORK DETAILS

PIPE SIZE
15mm

PIPE MATERIAL
Copper

WALL MEASUREMENTS - LIVING ROOM

WALL 1 - EXTERNAL

4.92m

WALL 2 - INTERNAL

4.60m

WALL 3 - INTERNAL

2.10m

WALL 4 - EXTERNAL

4.92m

WALL 5 - EXTERNAL

6.70m

WINDOWS - LIVING ROOM

WINDOW 1

2140×2010mm • East • 2002 to 2021 • uPVC

2880×1720mm • South • 2002 to 2021 •
uPVC

ROOM DESCRIPTION

Complete room-by-room assessment for heat pump sizing. Document windows, radiators, doors, and room dimensions.

[◀ BACK TO HEAT LOSS TABLE](#)

Office

EXTERNAL WALLS: 4

CEILING HEIGHT

2.65m

AREA

4.1m²

VOLUME

10.88m³

FLOOR MATERIAL

suspended_timber

ROOM STATUS

Heated



WALL TYPE SUMMARY

EXTERNAL WALLS

4

INTERNAL WALLS

0

HLP (HEAT LOSS PARTITION)

0

PARTY WALLS

0

PIPEWORK DETAILS

PIPE SIZE

15mm

PIPE MATERIAL

Copper

WALL MEASUREMENTS - OFFICE

WALL 1 - INTERNAL

2.15m

WALL 2 - EXTERNAL

1.91m

WALL 3 - INTERNAL

2.15m

WALL 4 - INTERNAL

1.91m

WINDOWS - OFFICE

WINDOW 1

1140×910mm • North • 2002 to 2021 • uPVC

RADIATORS

Radiator 1

ROOM DESCRIPTION

Complete room-by-room assessment for heat pump sizing. Document windows, radiators, doors, and room dimensions.

[◀ BACK TO HEAT LOSS TABLE](#)

Other

CEILING HEIGHT

2.65m

FLOOR MATERIAL

suspended_timber

ROOM STATUS

Heated

PIPEWORK DETAILS

PIPE SIZE

15mm

PIPE MATERIAL

Copper

WINDOWS - OTHER

WINDOW 1

1710×1680mm • East • 2002 to 2021 • uPVC



RADIATORS

Radiator 1

Type: Single Panel with Convector (Type 11)

Position: Internal wall

Size: 1000mm × 500mm

Space: 150mm / 150mm

ROOM DESCRIPTION

Complete room-by-room assessment for heat pump sizing. Document windows, radiators, doors, and room dimensions.

[◀ BACK TO HEAT LOSS TABLE](#)

Play room

EXTERNAL WALLS: 6

CEILING HEIGHT

2.65m

AREA

16.9m²

VOLUME

44.72m³

FLOOR MATERIAL

suspended_timber

WALL TYPE SUMMARY

EXTERNAL WALLS	INTERNAL WALLS
6	1
HLP (HEAT LOSS PARTITION)	PARTY WALLS
0	0

PIPEWORK DETAILS

PIPE SIZE	PIPE MATERIAL
15mm	Copper

WALL MEASUREMENTS - PLAY ROOM

WALL 1 - INTERNAL	WALL 2 - INTERNAL
2.17m	0.63m
WALL 3 - INTERNAL	WALL 4 - INTERNAL
1.10m	4.69m
WALL 5 - EXTERNAL	WALL 6 - INTERNAL
3.27m	2.09m
WALL 7 - INTERNAL	
3.23m	

WINDOWS - PLAY ROOM

WINDOW 1

1710×1680mm • East • 2002 to 2021 • uPVC

RADIATORS

Radiator 1

ROOM DESCRIPTION

Complete room-by-room assessment for heat pump sizing. Document windows, radiators, doors, and room dimensions.

[◀ BACK TO HEAT LOSS TABLE](#)

WC

EXTERNAL WALLS: 2

CEILING HEIGHT

2.65m

AREA

6.9m²

VOLUME

18.35m³

FLOOR MATERIAL

suspended_timber

ROOM STATUS

Heated



WALL TYPE SUMMARY

EXTERNAL WALLS	INTERNAL WALLS
2	1
HLP (HEAT LOSS PARTITION)	PARTY WALLS
1	0

PIPEWORK DETAILS

PIPE SIZE	PIPE MATERIAL
15mm	Copper

WALL MEASUREMENTS - WC

WALL 1 - INTERNAL	WALL 2 - EXTERNAL
2.03m	3.42m
WALL 3 - INTERNAL	WALL 4 - INTERNAL
2.03m	3.42m

WINDOWS - WC

WINDOW 1
1020×1360mm • East • 2002 to 2021 • uPVC

RADIATORS

Radiator 1

ROOM DESCRIPTION

Complete room-by-room assessment for heat pump sizing. Document windows, radiators, doors, and room dimensions.

[← BACK TO HEAT LOSS TABLE](#)

Cupboard

EXTERNAL WALLS: 2

CEILING HEIGHT

2.36m

VOLUME

4.73m³

FLOOR MATERIAL

suspended_timber

ROOM STATUS

Heated

WALL TYPE SUMMARY

EXTERNAL WALLS

2

INTERNAL WALLS

2

HLP (HEAT LOSS PARTITION)

0

PARTY WALLS

0

ROOM DESCRIPTION

Complete room-by-room assessment for heat pump sizing. Document windows, radiators, doors, and room dimensions.

[◀ BACK TO HEAT LOSS TABLE](#)

Bedroom 1

EXTERNAL WALLS: 2

CEILING HEIGHT

2.36m

AREA

17.4m²

VOLUME

41.08m³

FLOOR MATERIAL

suspended_timber

ROOM STATUS

Heated



WALL TYPE SUMMARY

EXTERNAL WALLS

2

INTERNAL WALLS

4

HLP (HEAT LOSS PARTITION)

0

PARTY WALLS

0

PIPEWORK DETAILS

PIPE SIZE

15mm

PIPE MATERIAL

Copper

WALL MEASUREMENTS - BEDROOM 1

WALL 1 - INTERNAL

2.62m

WALL 2 - INTERNAL

2.30m

WALL 3 - INTERNAL

1.72m

WALL 4 - INTERNAL

1.84m

WALL 5 - EXTERNAL

4.92m

WALL 6 - EXTERNAL

3.56m

WINDOWS - BEDROOM 1

WINDOW 1

1710×1350mm • East • 2002 to 2021 • uPVC

WINDOW 2

1710×1350mm • South • 2002 to 2021 •
uPVC



RADIATORS

Radiator 1

ROOM DESCRIPTION

Complete room-by-room assessment for heat pump sizing. Document windows, radiators, doors, and room dimensions.

[← BACK TO HEAT LOSS TABLE](#)

Cupboard

EXTERNAL WALLS: 2

CEILING HEIGHT

2.36m

AREA

2.0m²

VOLUME

4.73m³

FLOOR MATERIAL

suspended_timber

ROOM STATUS

Heated

WALL TYPE SUMMARY

EXTERNAL WALLS	INTERNAL WALLS
2	2
HLP (HEAT LOSS PARTITION)	PARTY WALLS
0	0

PIPEWORK DETAILS

PIPE SIZE	PIPE MATERIAL
15mm	Copper

WALL MEASUREMENTS - CUPBOARD

WALL 1 - INTERNAL	WALL 2 - INTERNAL
1.12m	1.79m
WALL 3 - EXTERNAL	WALL 4 - INTERNAL
1.12m	1.79m

RADIATORS

Radiator 1

ROOM DESCRIPTION

Complete room-by-room assessment for heat pump sizing. Document windows, radiators, doors, and room dimensions.

[◀ BACK TO HEAT LOSS TABLE](#)

En-suite Bathroom

EXTERNAL WALLS: 2

CEILING HEIGHT

2.36m

AREA

6.9m²

VOLUME

16.36m³

FLOOR MATERIAL

suspended_timber

ROOM STATUS

Heated

WALL TYPE SUMMARY

EXTERNAL WALLS

2

INTERNAL WALLS

2

HLP (HEAT LOSS PARTITION)

0

PARTY WALLS

0

PIPEWORK DETAILS

PIPE SIZE

15mm

PIPE MATERIAL

Copper



WALL MEASUREMENTS - EN-SUITE BATHROOM

WALL 1 - EXTERNAL

2.57m

WALL 2 - INTERNAL

3.04m

WALL 3 - INTERNAL

2.57m

WALL 4 - EXTERNAL

3.04m

WINDOWS - EN-SUITE BATHROOM

WINDOW 1

1700×1370mm • South • 2002 to 2021 •
uPVC

RADIATORS

Radiator 1

ROOM DESCRIPTION

Complete room-by-room assessment for heat pump sizing. Document windows, radiators, doors, and room dimensions.

[◀ BACK TO HEAT LOSS TABLE](#)

Bathroom

EXTERNAL WALLS: **1**

Ceiling Height

2.36m

AREA
7.5m²

VOLUME
17.70m³

FLOOR MATERIAL
suspended_timber

ROOM STATUS
Heated

WALL TYPE SUMMARY

EXTERNAL WALLS

1

INTERNAL WALLS

3

HLP (HEAT LOSS PARTITION)

0

PARTY WALLS

0

PIPEWORK DETAILS

PIPE SIZE

15mm

PIPE MATERIAL

Copper

WALL MEASUREMENTS - BATHROOM

WALL 1 - EXTERNAL

2.25m

WALL 2 - INTERNAL

3.04m

WALL 3 - INTERNAL

2.25m

WALL 4 - INTERNAL

3.04m

WINDOWS - BATHROOM

WINDOW 1

1030×1070mm • West • 2002 to 2021 • uPVC

RADIATORS

Radiator 1

Radiator 2

ROOM DESCRIPTION

Complete room-by-room assessment for heat pump sizing. Document windows, radiators, doors, and room dimensions.

[◀ BACK TO HEAT LOSS TABLE](#)

Landing

EXTERNAL WALLS: 3

CEILING HEIGHT

2.36m

AREA

23.9m²

VOLUME

56.43m³

FLOOR MATERIAL

suspended_timber

ROOM STATUS

Heated

WALL TYPE SUMMARY

EXTERNAL WALLS	INTERNAL WALLS
3	12
HLP (HEAT LOSS PARTITION)	PARTY WALLS
0	0

PIPEWORK DETAILS

PIPE SIZE	PIPE MATERIAL
15mm	Copper

WALL MEASUREMENTS - LANDING

WALL 1 - INTERNAL

1.73m

WALL 2 - INTERNAL

3.07m

WALL 3 - EXTERNAL

3.42m

WALL 4 - INTERNAL

1.76m

WALL 5 - INTERNAL

2.83m

WALL 6 - INTERNAL

1.76m

WALL 7 - EXTERNAL

0.46m

WALL 8 - INTERNAL

1.66m

WALL 9 - INTERNAL

1.10m

WALL 10 - INTERNAL

1.38m

WALL 11 - INTERNAL

1.45m

WALL 12 - INTERNAL

2.94m

WALL 13 - INTERNAL

1.77m

WALL 14 - INTERNAL

2.23m

WALL 15 - INTERNAL

1.19m

WINDOWS - LANDING

WINDOW 1

1720×1360mm • West • 2002 to 2021 • uPVC

RADIATORS

Radiator 1

ROOM DESCRIPTION

Complete room-by-room assessment for heat pump sizing. Document windows, radiators, doors, and room dimensions.

◀ BACK TO HEAT LOSS TABLE

Bathroom 2

EXTERNAL WALLS: 2

CEILING HEIGHT

Sloping 1.59m - 2.36m

AREA

4.4m²

VOLUME

10.30m³

FLOOR MATERIAL

suspended_timber

ROOM STATUS

Heated

WALL TYPE SUMMARY

EXTERNAL WALLS

2

INTERNAL WALLS

3

HLP (HEAT LOSS PARTITION)

0

PARTY WALLS

0

PIPEWORK DETAILS

PIPE SIZE

15mm

PIPE MATERIAL

Copper

WALL MEASUREMENTS - BATHROOM 2

WALL 1 - EXTERNAL

1.48m

WALL 2 - EXTERNAL

1.15m

WALL 3 - INTERNAL

1.66m

WALL 4 - INTERNAL

2.63m

WALL 5 - INTERNAL

1.66m

WINDOWS - BATHROOM 2

WINDOW 1

890×1080mm • West • 2002 to 2021 • uPVC

RADIATORS

Radiator 1

ROOM DESCRIPTION

Complete room-by-room assessment for heat pump sizing. Document windows, radiators, doors, and room dimensions.

[← BACK TO HEAT LOSS TABLE](#)



Bedroom 2

EXTERNAL WALLS: 3

CEILING HEIGHT

2.36m

AREA

8.3m²

VOLUME

19.67m³

FLOOR MATERIAL

suspended_timber

ROOM STATUS

Heated

WALL TYPE SUMMARY

EXTERNAL WALLS

3

INTERNAL WALLS

4

HLP (HEAT LOSS PARTITION)

0

PARTY WALLS

0

PIPEWORK DETAILS

PIPE SIZE

15mm

PIPE MATERIAL

Copper

WALL MEASUREMENTS - BEDROOM 2

WALL 1 - INTERNAL

1.56m

WALL 2 - EXTERNAL

1.07m

WALL 3 - EXTERNAL

2.21m

WALL 4 - EXTERNAL

3.04m

WALL 5 - INTERNAL

2.18m

WALL 6 - INTERNAL

1.48m

WALL 7 - INTERNAL

1.10m

WINDOWS - BEDROOM 2

WINDOW 1

1020×1360mm • North • Unknown • uPVC

RADIATORS

Radiator 1

ROOM DESCRIPTION

Complete room-by-room assessment for heat pump sizing. Document windows, radiators, doors, and room dimensions.

◀ BACK TO HEAT LOSS TABLE

Bedroom 3

EXTERNAL WALLS: 2

CEILING HEIGHT

2.36m

AREA

13.1m²

VOLUME

30.93m³

FLOOR MATERIAL

suspended_timber

ROOM STATUS

Heated

WALL TYPE SUMMARY

EXTERNAL WALLS

2

INTERNAL WALLS

3

HLP (HEAT LOSS PARTITION)

0

PARTY WALLS

0

PIPEWORK DETAILS

PIPE SIZE

15mm

PIPE MATERIAL

Copper

WALL MEASUREMENTS - BEDROOM 3

WALL 1 - INTERNAL

1.41m

WALL 2 - INTERNAL

2.22m

WALL 3 - EXTERNAL

3.56m

WALL 4 - EXTERNAL

3.63m

WALL 5 - INTERNAL

3.56m

WINDOWS - BEDROOM 3

WINDOW 1

1590×1270mm • East • Unknown • uPVC

RADIATORS

Radiator 1

ROOM DESCRIPTION

Complete room-by-room assessment for heat pump sizing. Document windows, radiators, doors, and room dimensions.

[◀ BACK TO HEAT LOSS TABLE](#)

Bedroom 4

EXTERNAL WALLS: 2



CEILING HEIGHT

2.36m

AREA

10.1m²

VOLUME

23.86m³

FLOOR MATERIAL

suspended_timber

ROOM STATUS

Heated

WALL TYPE SUMMARY

EXTERNAL WALLS

2

INTERNAL WALLS

3

HLP (HEAT LOSS PARTITION)

0

PARTY WALLS

0

PIPEWORK DETAILS

PIPE SIZE

15mm

PIPE MATERIAL

Copper

WALL MEASUREMENTS - BEDROOM 4

WALL 1 - INTERNAL

2.84m

WALL 2 - INTERNAL

3.56m

WALL 3 - EXTERNAL

2.84m

WALL 4 - INTERNAL

1.84m

WALL 5 - INTERNAL

1.72m

WINDOWS - BEDROOM 4

WINDOW 1

1590×1040mm • East • Unknown • uPVC

RADIATORS

Radiator 1

ROOM DESCRIPTION

Complete room-by-room assessment for heat pump sizing. Document windows, radiators, doors, and room dimensions.

◀ BACK TO HEAT LOSS TABLE

Other

CEILING HEIGHT

2.36m

FLOOR MATERIAL

suspended_timber

ROOM STATUS

Heated

PIPEWORK DETAILS

PIPE SIZE

15mm

PIPE MATERIAL

Copper

WINDOWS - OTHER

WINDOW 1

1000×1060mm • East • Unknown • uPVC

RADIATORS

Radiator 1

Type: Single Panel (No Fins/Convactor)

Position: Under window

Size: 800mm × 500mm

Space: 400mm / 450mm

Cill Height: 938mm

ROOM DESCRIPTION

Complete room-by-room assessment for heat pump sizing. Document windows, radiators, doors, and room dimensions.



 PROPERTY

 HEAT LOSS...

 ROOMS / F...

 HEATING /...

 ELECTRICA...

 LOFT

 ASHP

 CYLINDER




HEATING SYSTEMS & RADIATORS

CURRENT HEATING SYSTEM ASSESSMENT & RADIATOR
EVALUATION

Sample Address (Redacted)

 SOLAR PV ...

 EPC / ENE...

 PHOTO DOC...

 INSTALLAT...

 THERMAL I...



YOUR LOGO HERE

SAMPLE DOCUMENT — DETAILS REDACTED

CURRENT HEATING SYSTEM

Oil boiler

BOILER TYPE

Oil boiler

HOT WATER SOURCE

From main heating system

HEATING CONTROLS

Room thermostat

FUEL TYPE

Oil

HAS CYLINDER

Yes

CYLINDER CEILING SLOPED

Yes

FLOW/RETURN PIPE MEASURE...

28mm

CYLINDER DETAILS

CYLINDER INSULATION

Yes

CYLINDER LOCATION

Cupboard

RESTRICTED ENTRY

No



LOCATION NOTES

Cupboard

RADIATOR SCHEDULE (20 TOTAL)

ROOM	#	TYPE	POSITION	DIMENSIONS	SPACING
Utility Room	1	Double Panel (No Fins/Convactor)	Internal wall	1600mm × 600mm	150mm
Other	1	Single Panel (No Fins/Convactor)	External wall	960mm × 730mm	1300mm / 50mm
Other	2	Double Panel (No Fins/Convactor)	Internal wall	1120mm × 74mm	600mm / 500mm
Living Room	1	Double Panel (No Fins/Convactor)	External wall	800mm × 600mm	150mm / 80mm
Living Room	2	Double Panel (No Fins/Convactor)	Internal wall	800mm × 600mm	300mm / 250mm
Office	1	Single Panel (No Fins/Convactor)	Internal wall	1120mm × 580mm	20mm / 50mm
Other	1	Single Panel with Convactor (Type 11)	Internal wall	1000mm × 500mm	150mm / 150mm
Play room	1	Single Panel (No Fins/Convactor)	Internal wall	3100mm × 450mm	30mm
WC	1	Single Panel (No Fins/Convactor)	Internal wall	960mm × 600mm	300mm / 200mm
Bedroom 1	1	Single Panel (No Fins/Convactor)	Under window	1900mm × 600mm	250mm / 600mm
Cupboard	1	Single Panel (No Fins/Convactor)	Internal wall	720mm × 580mm	200mm / 200mm
En-suite Bathroom	1	Single Panel (No Fins/Convactor)	Under window	1280mm × 600mm	100mm / 350mm
Bathroom	1	Single Panel with Convactor (Type 11)	Internal wall	500mm × 600mm	50mm
Bathroom	2	Towel Rail / Ladder Towel Rail	Internal wall	400mm × 1200mm	N/A
Landing	1	Double Panel (No Fins/Convactor)	Under window	1600mm × 600mm	450mm / 450mm
Bathroom 2	1	Single Panel (No Fins/Convactor)	Internal wall	750mm × 830mm	50mm / 150mm
Bedroom 2	1	Single Panel (No Fins/Convactor)	Under window	1120mm × 600mm	150mm / 10mm
Bedroom 3	1	Single Panel (No Fins/Convactor)	Under window	1300mm × 600mm	600mm / 150mm
Bedroom 4	1	Single Panel (No Fins/Convactor)	Under window	1100mm × 600mm	200mm / 600mm
Other	1	Single Panel (No Fins/Convactor)	Under window	800mm × 500mm	400mm / 450mm

 PROPERTY

 HEAT LOSS...

 ROOMS / F...

 HEATING /...

 ELECTRICA...

 LOFT

 ASHP

 CYLINDER



ELECTRICAL SYSTEMS

ELECTRICAL SYSTEM ASSESSMENT & CONSUMER UNIT
DETAILS

Sample Address (Redacted)

 SOLAR PV ...


 EPC / ENE...

 PHOTO DOC...

 INSTALLAT...

 THERMAL I...



YOUR LOGO HERE
SAMPLE DOCUMENT — DETAILS REDACTED



READY FOR HEAT PUMP INSTALLATION

Your electrical system is ready for heat pump installation. You have single-phase power with sufficient capacity (80A main fuse) and 2 spare ways in your consumer unit for the heat pump equipment. No electrical upgrades should be required.

PHASE: MAIN FUSE:SPARE WAYS:
Single Phase80A 2

METER INFORMATION

METER LOCATION

In entrance

METER ACCESSIBLE

Yes

METER TYPE

dual_rate_economy_7

SYSTEM DETAILS

PHASE

Single Phase

CONSUMER UNIT LOCATION

In entrance

MAIN FUSE RATING

80A


SPARE CAPACITY

SPARE WAYS

2

 PROPERTY

 HEAT LOSS...

 ROOMS / F...

 HEATING /...

 ELECTRICA...

 LOFT

 ASHP

 CYLINDER



LOFT ASSESSMENT

LOFT SPACE ASSESSMENT & INSULATION EVALUATION

Sample Address (Redacted)

 SOLAR PV ...

 EPC / ENE...

 PHOTO DOC...

 INSTALLAT...

 THERMAL I...



YOUR LOGO HERE

SAMPLE DOCUMENT — DETAILS REDACTED

INSULATION DETAILS

INSULATION COVERAGE

None%

INSULATION DEPTH

Unknown

INSULATION THICKNESS

100

ACCESS DETAILS

LOFT ACCESS

yes

HATCH SIZE

0.58x0.65m

LOFT CONDITION & INFRASTRUCTURE

LOFT BOARDED

yes

HAS LIGHTING

No

LOFT HEIGHT

2527000mm



PROPERTY



HEAT LOSS...



ROOMS / F...



HEATING /...



ELECTRICA...



LOFT



ASHP



CYLINDER



ASHP LOCATION

AIR SOURCE HEAT PUMP LOCATION & INSTALLATION
ASSESSMENT

Sample Address (Redacted)



SOLAR PV ...



EPC / ENE...



PHOTO DOC...



INSTALLAT...



THERMAL I...



YOUR LOGO HERE

SAMPLE DOCUMENT — DETAILS REDACTED



VERTEX

The New Standard for Renewable Surveys

Sample Customer - Sample Address (Redacted)

Surveyor: Simon Elliott

Page 57 of 72

MOUNTING TYPE
ground_mounted

GROUND TYPE
concrete

BARRIER BETWEEN ASHP LOCA...
[object Object]

DISTANCE MEASUREMENTS

Distance to Flue:	8
Distance to Property:	0 m
Distance to Consumer Unit:	3 m
Distance to Cylinder:	5 m

INSTALLATION PLANNING

SCAFFOLD REQUIRED
No

ACCESS METHOD
[object Object]

ASHP SAFETY & DRAINAGE

DRAINAGE TYPE
drain_connection

LOCATION PHOTOS



ASHP Location Photos



PROPERTY



HEAT LOSS...



ROOMS / F...



HEATING /...



ELECTRICA...



LOFT



ASHP



CYLINDER



CYLINDER LOCATION

HOT WATER CYLINDER LOCATION & INSTALLATION
PLANNING

Sample Address (Redacted)



SOLAR PV ...



EPC / ENE...



PHOTO DOC...



INSTALLAT...



THERMAL I...



YOUR LOGO HERE

SAMPLE DOCUMENT — DETAILS REDACTED



VERTEX

The New Standard for Renewable Surveys

Sample Customer - Sample Address (Redacted)

Surveyor: Simon Elliott

Page 60 of 72

CYLINDER LOCATION

Cupboard

CYLINDER INSULATION


Yes

LOCATION NOTES

Cupboard

 PROPERTY

 HEAT LOSS...

 ROOMS / F...

 HEATING /...

 ELECTRICA...

 LOFT

 ASHP

 CYLINDER



SOLAR PV SURVEY

SOLAR PV SYSTEM ASSESSMENT & ROOF ANALYSIS

Sample Address (Redacted)

 SOLAR PV ...

 EPC / ENE...

 PHOTO DOC...

 INSTALLAT...

 THERMAL I...




YOUR LOGO HERE

SAMPLE DOCUMENT — DETAILS REDACTED

 PROPERTY

 HEAT LOSS...

 ROOMS / F...

 HEATING /...

 ELECTRICA...

 LOFT

 ASHP

 CYLINDER



EPC & ENERGY BILLS

ENERGY PERFORMANCE CERTIFICATE & ENERGY SUPPLIER
INFORMATION

Sample Address (Redacted)

 SOLAR PV ...

 EPC / ENE...

 PHOTO DOC...

 INSTALLAT...

 THERMAL I...



YOUR LOGO HERE

SAMPLE DOCUMENT — DETAILS REDACTED

EPC DATA & FLOOR AREAS

PROPERTY TYPE	PROPERTY AGE
House	1967 1975
FLOOR CONSTRUCTION	OCCUPANCY
Suspended Timber	Home All Day
TIME AT HOME	WALL CONSTRUCTION
Not Available	Cavity wall
WALL TYPE	ROOF CONSTRUCTION
Cavity wall	Unknown

ENERGY BILLS & USAGE

CUSTOMER HAS BILL
Yes

UNUSUAL ELECTRICAL LOADS
<div><div>• Swimming Pool</div><div>• Electric Vehicle Charger (EV)</div></div>

PLANUP EPC FLOOR PLAN
PlanUp EPC Floor Plan

FLOOR AREA BREAKDOWN			
FLOOR	TOTAL AREA	HABITABLE AREA	HEATED AREA
Floor 1	240.41 m²	92.78 m²	34.71 m²
Floor 2	103.54 m²	52.89 m²	52.89 m²

EPC METRICS BY FLOOR

FLOOR	HEAT LOSS PERIMETER	PARTY WALLS	AVG CEILING HEIGHT
Ground Floor	179.53 m	0	N/A
First Floor	133.69 m	0	N/A

TOTAL FLOOR AREA

343.95 m²

TOTAL HABITABLE AREA

145.67 m²

TOTAL HEATED AREA

87.60 m²

UNHEATED HABITABLE AREA

58.07 m²

WINDOW DOCUMENTATION (EPC)

Window Photo

430×800mm

Room: Entrance Hall

Orientation: South

Pre 2002

Window Photo

2360×1170mm

Room: Utility Room

Orientation: South

Pre 2002

Window Photo

2380×1520mm

Room: Kitchen/Dining Room

Orientation: South

Pre 2002

Window Photo

890×1080mm

Room: Kitchen/Dining Room

Orientation: North

Pre 2002

Window Photo

560×1180mm

Room: Other

Orientation: North

Pre 2002

Window Photo

1460×890mm

Room: Other

Orientation: West

Pre 2002

Window Photo

2140×2010mm

Room: Living Room

Orientation: East

2002 to 2021

Window Photo

2140×2010mm

Room: Living Room

Orientation: East

2002 to 2021

Window Photo

2880×1720mm

Room: Living Room

Orientation: South

2002 to 2021

Window Photo

1140×910mm

Room: Office

Orientation: North

2002 to 2021

Window Photo

1710×1680mm

Room: Other

Orientation: East

2002 to 2021

Window Photo

1710×1680mm

Room: Play room

Orientation: East

2002 to 2021

Window Photo

1020×1360mm

Room: WC

Orientation: East

2002 to 2021

Window Photo

1710×1350mm

Room: Bedroom 1

Orientation: East

2002 to 2021

<div>Window Photo</div> <div>1710×1350mm</div> <div>Room: Bedroom 1</div> <div>Orientation: South</div> <div>2002 to 2021</div>	<div>Window Photo</div> <div>1700×1370mm</div> <div>Room: En-suite Bathroom</div> <div>Orientation: South</div> <div>2002 to 2021</div>	<div>Window Photo</div> <div>1030×1070mm</div> <div>Room: Bathroom</div> <div>Orientation: West</div> <div>2002 to 2021</div>	<div>Window Photo</div> <div>1720×1360mm</div> <div>Room: Landing</div> <div>Orientation: West</div> <div>2002 to 2021</div>	<div>Window Photo</div> <div>890×1080mm</div> <div>Room: Bathroom 2</div> <div>Orientation: West</div> <div>2002 to 2021</div>
<div>Window Photo</div> <div>1020×1360mm</div> <div>Room: Bedroom 2</div> <div>Orientation: North</div> <div>Unknown</div>	<div>Window Photo</div> <div>1590×1270mm</div> <div>Room: Bedroom 3</div> <div>Orientation: East</div> <div>Unknown</div>	<div>Window Photo</div> <div>1590×1040mm</div> <div>Room: Bedroom 4</div> <div>Orientation: East</div> <div>Unknown</div>	<div>Window Photo</div> <div>1000×1060mm</div> <div>Room: Other</div> <div>Orientation: East</div> <div>Unknown</div>	



PROPERTY



HEAT LOSS...



ROOMS / F...



HEATING / ...



ELECTRICA...



LOFT



ASHP



CYLINDER



PHOTO DOCUMENTATIO N

COMPLETE PHOTO DOCUMENTATION OF SURVEY
ASSESSMENT

Sample Address (Redacted)



SOLAR PV ...



EPC / ENE...



PHOTO DOC...



INSTALLAT...



THERMAL I...



YOUR LOGO HERE

SAMPLE DOCUMENT — DETAILS REDACTED



VERTEX

The New Standard for Renewable Surveys

Sample Customer - Sample Address (Redacted)

Surveyor: Simon Elliott


Page 68 of 72

PHOTO DOCUMENTATION

No photo documentation available for this property.

 PROPERTY

 HEAT LOSS...

 ROOMS / F...

 HEATING /...

 ELECTRICA...

 LOFT

 ASHP

 CYLINDER



INSTALLATION REFERENCE

TECHNICAL INSTALLATION REFERENCE & SPECIFICATIONS

Sample Address (Redacted)

 SOLAR PV ...

 EPC / ENE...

 PHOTO DOC...

 INSTALLAT...

 THERMAL I...



YOUR LOGO HERE

SAMPLE DOCUMENT — DETAILS REDACTED

SURVEY TIMING

SURVEY START

11:33

FUTURE EXTENSION DETAILS

Maybe a while in the future (10 years) no plans

FUTURE EXTENSIONS PLANNING

FUTURE EXTENSIONS PLANNED

Yes

ARCHITECT DRAWINGS AVAILA...

No

POWER SHOWER

POWER SHOWER PRESENT

No

HIDDEN RADIATORS NOTES

In wardrobe



THERMAL IMAGING REQUIRED

No